

HAM RADIO

DELUXE

# REMOTE SERVER

USER GUIDE



*Simon Brown, HB9DRV*  
*Programmer-in-Chief*

Last update: Monday, June 14, 2004

Sponsor:



The Radios used in this project were supplied by Martin Lynch and Sons of London.

Special thanks are due to Chris Taylor for his friendly and efficient service.

# TABLE OF CONTENTS

<b><u>INTRODUCTION</u></b> .....	<b>5</b>
<b>REQUIREMENTS</b> .....	<b>5</b>
<b>TECHNOLOGY</b> .....	<b>5</b>
<b><u>INSTALLING</u></b> .....	<b>7</b>
<b><u>CONFIGURING</u></b> .....	<b>9</b>
<b><u>CONNECTING</u></b> .....	<b>11</b>



## **INTRODUCTION**

The HRD Remote Server enables a connection between Ham Radio Deluxe and a radio connected to a remote computer which can be contacted via TCP/IP.

## **REQUIREMENTS**

The remote computer must be running Windows NT – that is NT 4.0, 2000, 2003 or XP. Windows 95, 98 and various flavours thereof are not supported.

## **TECHNOLOGY**

A Windows service is installed on the remote service. This listens on a port (usually 7805) for incoming connections from Ham Radio Deluxe.



# INSTALLING

The HRD Remote Server files are:

- HRDRemoteSvr.exe – the executable,
- HRDRemoteSvr.cfg – configuration file, and
- HRDRemoteSvr README.txt – essential reading.

To install the service:

1. Open a DOS window
2. Use CD to change the current directory to the directory containing HRDRemoteSvr.exe . This is the directory created when HRD is installed, for example:

C:\Program Files\Amateur Radio\Ham Radio Deluxe

3. Enter: `HRDRemoteSvr.exe -install`

This will create a new Windows service called *HRD RemoteSvr*. You now start the *Services* applet (Start – Settings – Control Panel – Administrative Tools – Services) to modify the properties of the service.

The service Startup Type will be *Manual*, if you want to start the service when the system restarts then change this to *Automatic* (just double-click on the entry to bring up the *Properties* window).

4. To run the service from a DOS window enter: `HRDRemoteSvr -debug`

You see the service running with full debug information (required by the HRD development team when in severe panic mode). This is most useful to verify that the service is running properly.





# CONFIGURING

The service is configured with HRDRemoteSvr.cfg – you can edit this file with Notepad or the editor of your choice.

```
#
# Ham Radio Deluxe Remote Access Server
# -----
#
# Copyright (c) 2004 by Simon Brown, HB9DRV.
#
# Note: this only runs on Windows NT/2K/XP. It does not run
# on Windows 95/98/ME/SE.
#
# This file defines the configuration of the Remote Access Server.
# The format of each entry is TOKEN = VALUE.
#
# Supported tokens
# -----
# COM
# PORT
# USER1 to USER20
# WELCOME
#
#
# A comma-separated list of COM ports that are returned. If not defined then
# the server returns a list of all COM ports available on the computer.
#
#COM = COM1,COM2,COM3,COM4
#COM = COM1
#
# The TCP/IP port on which the server listens for connections. If not defined
# then the default value of 7805 is used. Select any port number you want which
# is not in use by other programs.
#
PORT = 7805
#
# Username/passwords, these are case-insensitive. Spaces are removed
# from the beginning and end of the username and password.
#
# The format is USERx = username,password
#
USER1 = Simon,SnowTime
USER2 = Peter,Uberwald
USER20 = Donald,California
#
# Welcome text, displayed on the remote user's computer. Note that
# \n is replaced with a newline. Enter up to 511 characters on a single line.
#
WELCOME = Welcome to the HRD Remote Access Server.\n\nPlease don't break anything!
```

The contents of this file should be obvious.



## CONNECTING

To connect to the remote server enter values as normal but select the *Remote* port, then press **Connect**.

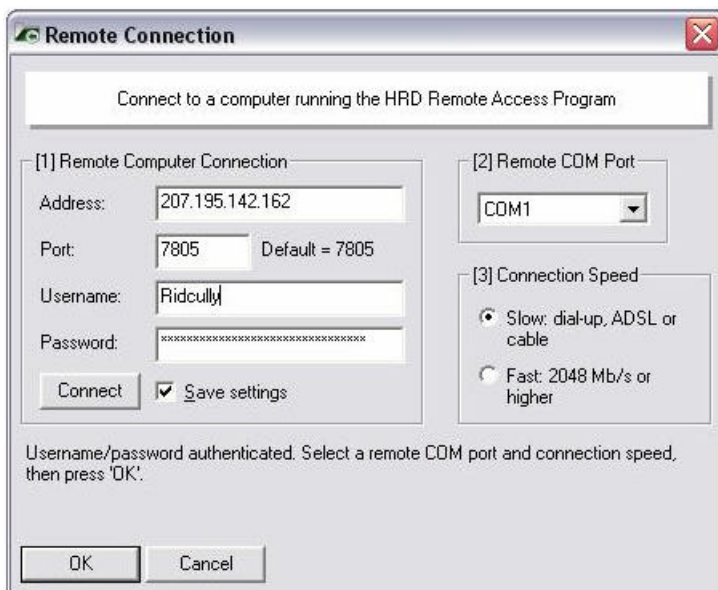
Pic

When you press **Connect** the Remote Connection window is displayed.

Enter connection information:

1. Address – the remote computer address in either numeric or alphabetic form – for example 195.154.179.101 or [www.laax-drv.ch](http://www.laax-drv.ch).
2. Port – the port assigned to the remote service, usually 7805.
3. Username – a valid username defined in the configuration file. This is case-insensitive.
4. Password – the password corresponding to the username. This is case-insensitive.
5. If you want to save these values make sure the *Save settings* option is checked .

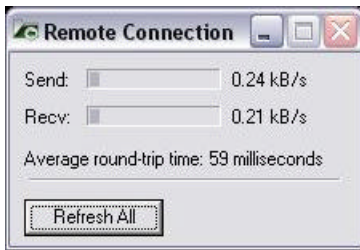
Press **Connect**. If the connection is successful the text *Username/password authenticated. Select a remote COM port and connection speed, then press 'OK'* is displayed.



Now select the COM port and connection speed. You should select the Slow connection speed unless you are using an internal LAN.

Press **OK** to connect to the remote COM port and start the HRD radio display.

A *Remote Status* display window shows you the data throughput and average round-trip time.



The average round-trip time is the time required to send a message from HRD to the remote server and get a response. This will be very similar to the value shown when you use Ping to interrogate a remote host. Typically values of 50 milliseconds or less is very usable.

When you select the slow connection speed only the frequency and s-meter are refreshed. To refresh all other buttons and slider click **Refresh All** .



---

**SIMON BROWN  
HB9DRV**

Postfach 159  
7031 Laax  
Switzerland

[simon@hb9drv.ch](mailto:simon@hb9drv.ch)  
[www.hb9drv.ch](http://www.hb9drv.ch)